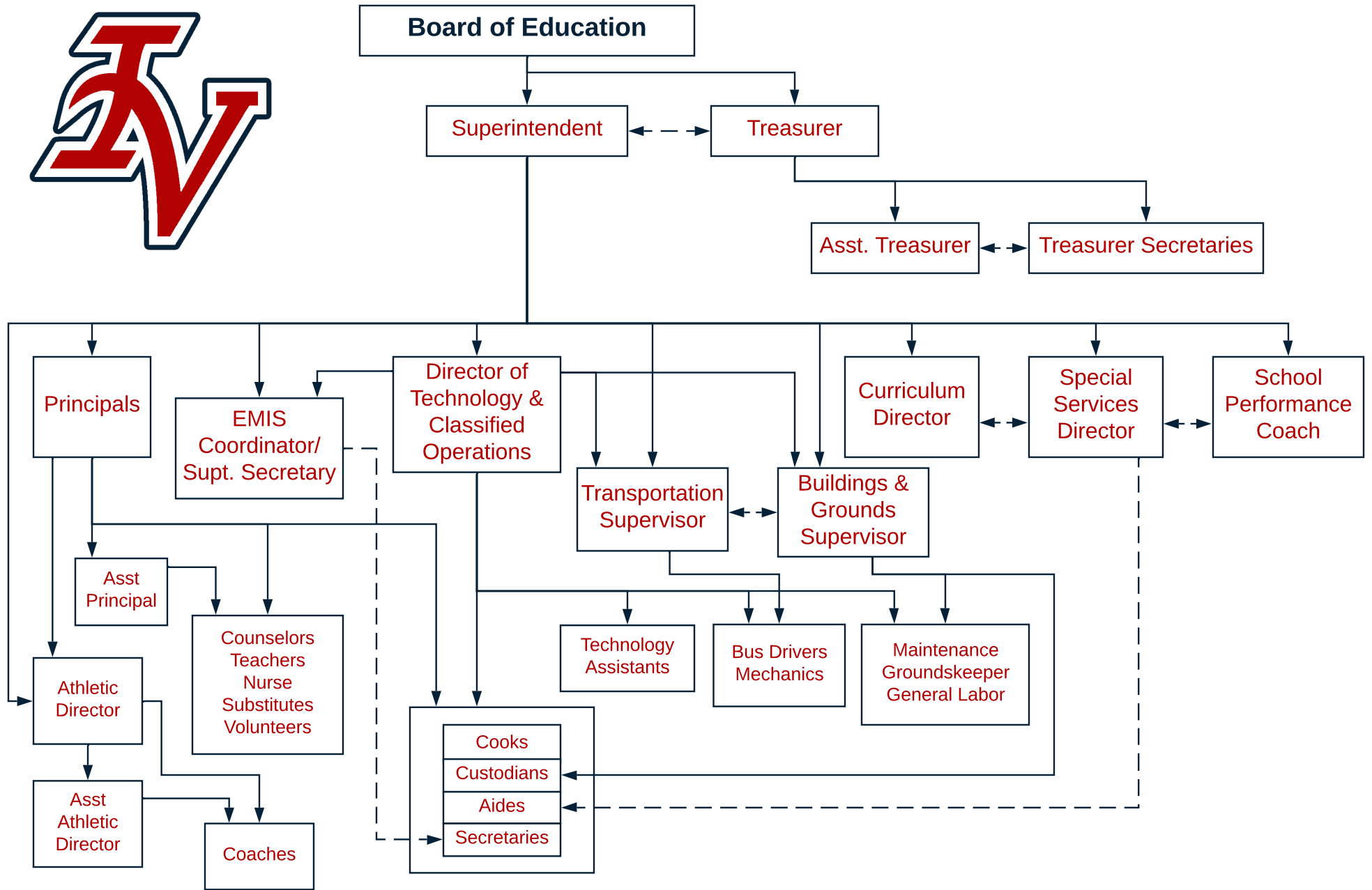


Indian Valley Local Schools Organizational Chart



Note: The organizational chart exists to clarify the appropriate "Chain of Command" for possible evaluation purposes and problem solving. It is expected that all members of IVLS demonstrate professionalism by working and communicating cooperatively to serve as examples to students and achieve the district's Vision and Mission.

—————> Indicates direct report and possible evaluation responsibilities.

- - - - -> Indicates Administrative consultation and/or shared responsibilities.